

ALPOLIC® & ALPOLIC®/fr

MATERIALS

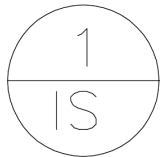
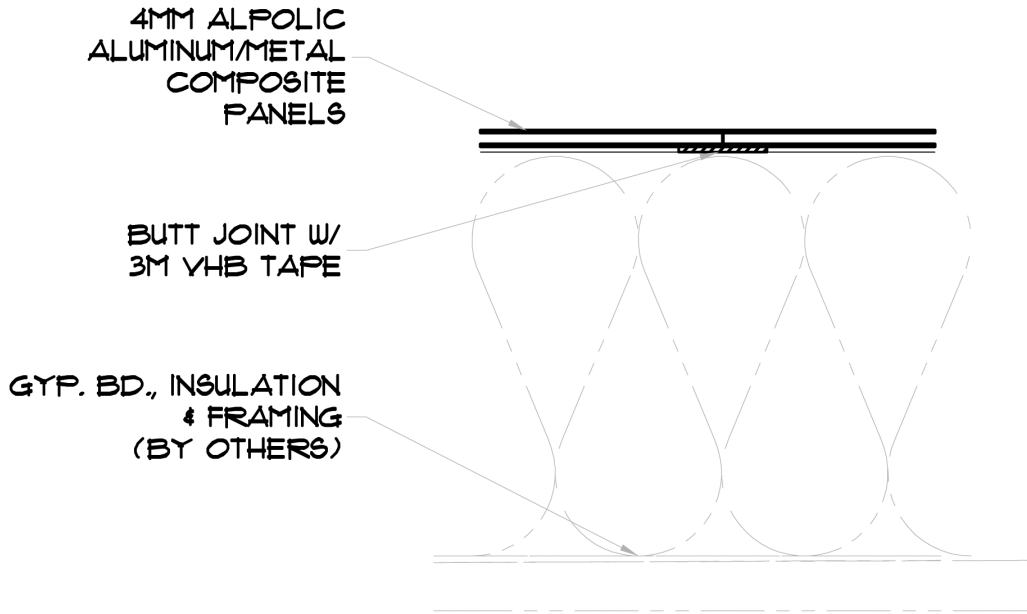
 MITSUBISHI PLASTICS COMPOSITES AMERICA, INC.

INTERIOR SYSTEM

10.01.05

www.alpolic-northamerica.com

The design, fabrication and installation of the ALPOLIC® panels are the sole responsibility of the purchaser. The information contained on this website is for conceptual use only. Mitsubishi Plastics Composites America, Inc. shall have no responsibility or liability for the products usage or infringement of any patent or other proprietary right.



VERTICAL WALL JOINT

SCALE: 6" = 1'-0"

ALPOLIC® & ALPOLIC®/fr

MATERIALS

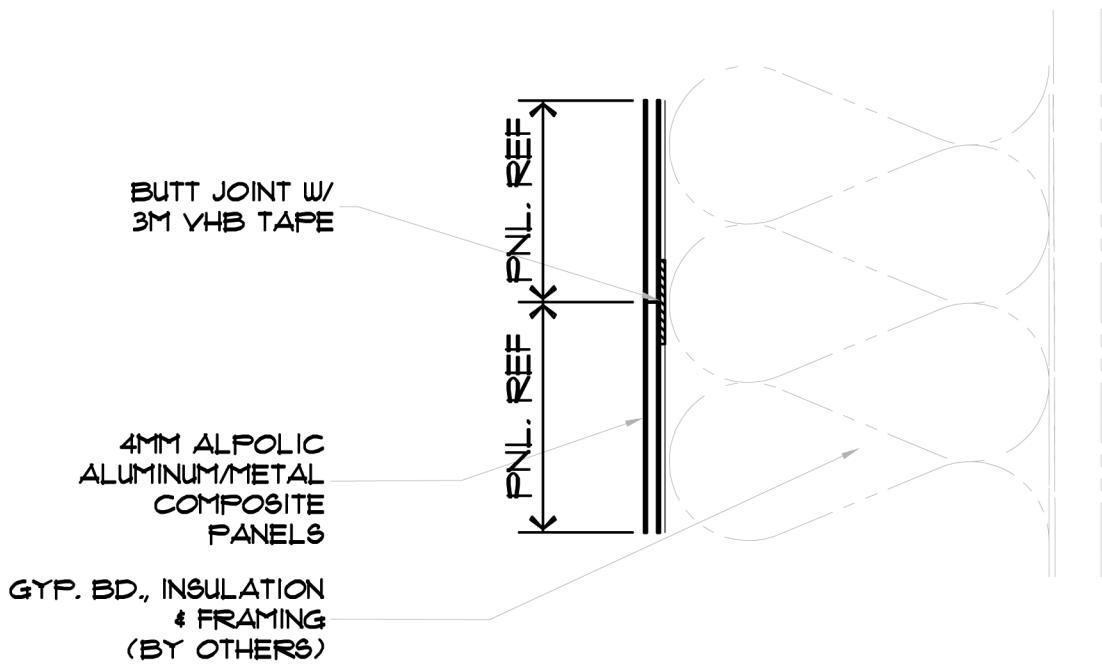
 MITSUBISHI PLASTICS COMPOSITES AMERICA, INC.

INTERIOR SYSTEM

10.01.05

www.alpolyc-northamerica.com

The design, fabrication and installation of the ALPOLIC® panels are the sole responsibility of the purchaser. The information contained on this website is for conceptual use only. Mitsubishi Plastics Composites America, Inc. shall have no responsibility or liability for the products usage or infringement of any patent or other proprietary right.



2 HORIZONTAL WALL JOINT
 IS SCALE: 6" = 1'-0"

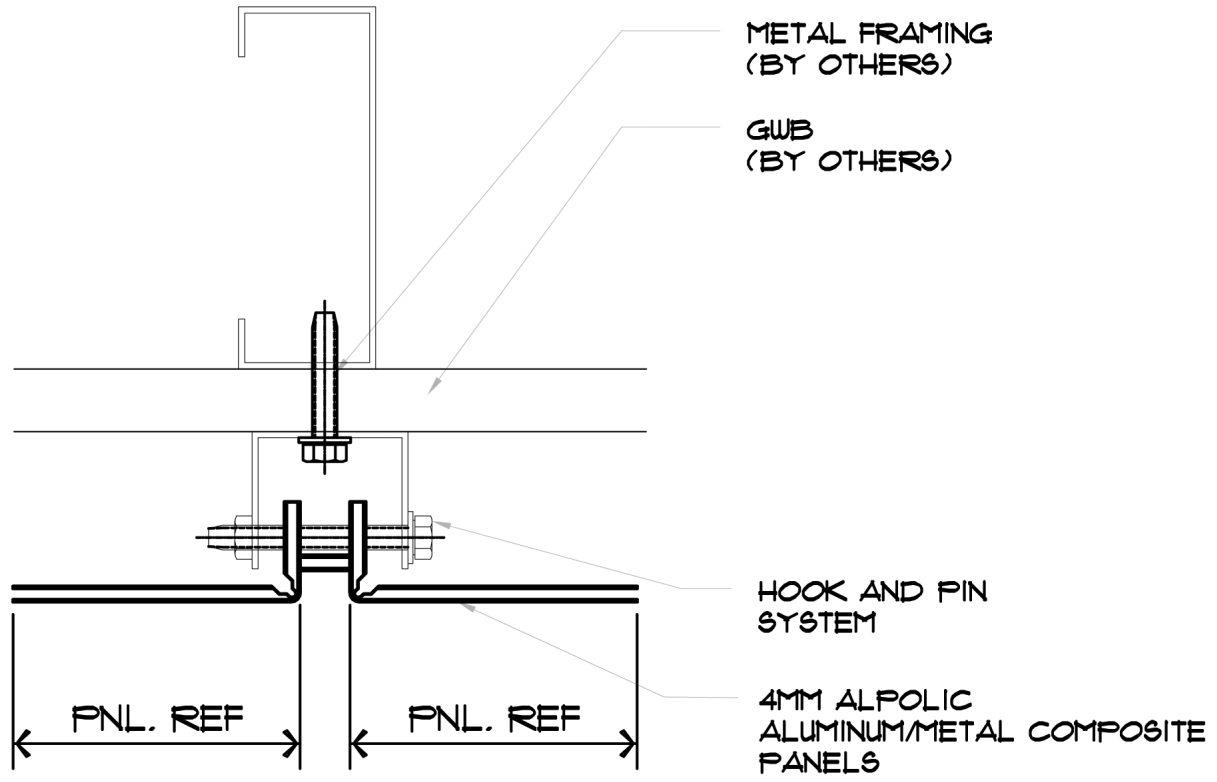
ALPOLIC® & ALPOLIC®/fr

MATERIALS

MITSUBISHI PLASTICS COMPOSITES AMERICA, INC.

INTERIOR SYSTEM
 10.01.05
www.alpolyc-northamerica.com

The design, fabrication and installation of the ALPOLIC® panels are the sole responsibility of the purchaser. The information contained on this website is for conceptual use only. Mitsubishi Plastics Composites America, Inc. shall have no responsibility or liability for the products usage or infringement of any patent or other proprietary right.



3 HOOK AND PIN WALL VERTICAL
 IS SCALE: 6" = 1'-0"

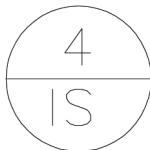
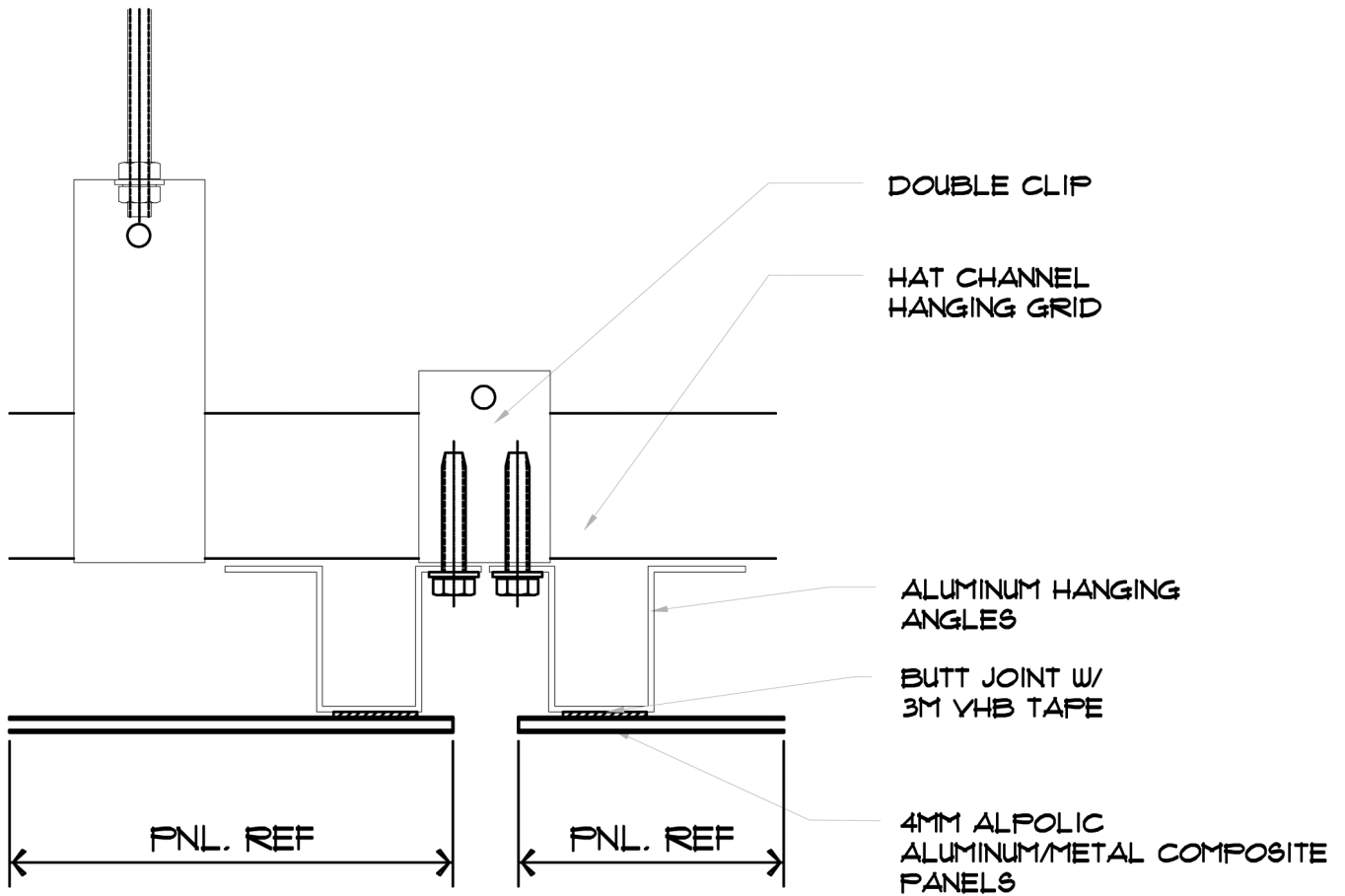
ALPOLIC® & ALPOLIC®/fr

MATERIALS

 MITSUBISHI PLASTICS COMPOSITES AMERICA, INC.

INTERIOR SYSTEM
 10.01.05
www.alpoliC-northamerica.com

The design, fabrication and installation of the ALPOLIC® panels are the sole responsibility of the purchaser. The information contained on this website is for conceptual use only. Mitsubishi Plastics Composites America, Inc. shall have no responsibility or liability for the products usage or infringement of any patent or other proprietary right.



SUSPENDED CEILING

SCALE: 6" = 1'-0"

ALPOLIC® & ALPOLIC®/fr

MATERIALS

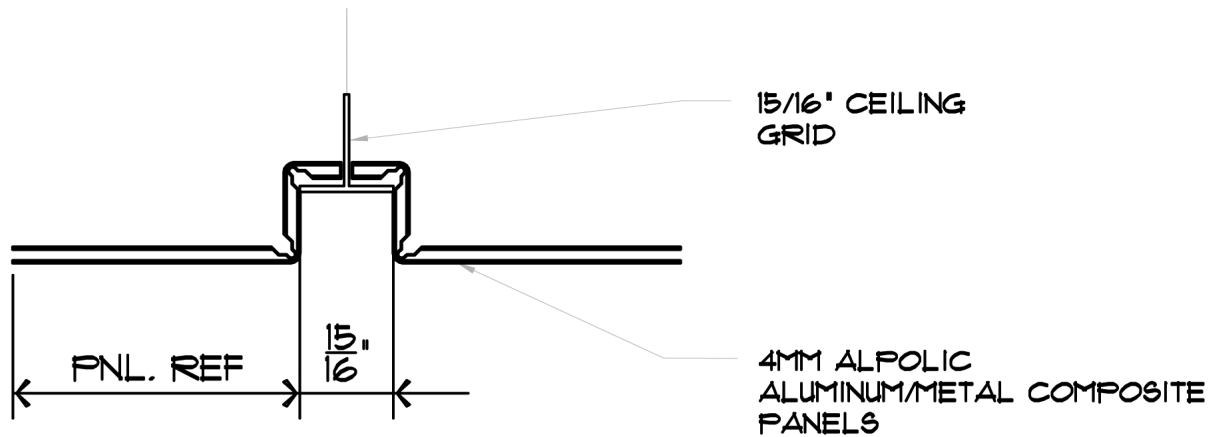
 MITSUBISHI PLASTICS COMPOSITES AMERICA, INC.

INTERIOR SYSTEM

10.01.05

www.alpolic-northamerica.com

The design, fabrication and installation of the ALPOLIC® panels are the sole responsibility of the purchaser. The information contained on this website is for conceptual use only. Mitsubishi Plastics Composites America, Inc. shall have no responsibility or liability for the products usage or infringement of any patent or other proprietary right.



5 TYPICAL SUSPENDED GRID
 IS SCALE: 6" = 1'-0"

ALPOLIC® & ALPOLIC®/fr

MATERIALS

 MITSUBISHI PLASTICS COMPOSITES AMERICA, INC.

INTERIOR SYSTEM
 10.01.05
www.alpolic-northamerica.com

The design, fabrication and installation of the ALPOLIC® panels are the sole responsibility of the purchaser. The information contained on this website is for conceptual use only. Mitsubishi Plastics Composites America, Inc. shall have no responsibility or liability for the products usage or infringement of any patent or other proprietary right.